

# Who am I?

## *Showing identity through the arts*

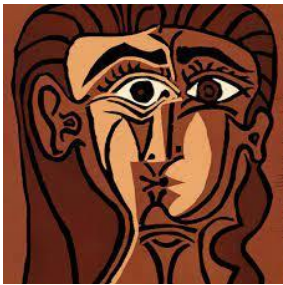
### Key Artists

**Pablo Picasso** (25 October 1881 – 8 April 1973) was a Spanish painter, sculptor, printmaker, ceramicist and theatre designer who spent most of his adult life in France.

**Henry Moore**: (30 July 1896 – 31 August 1986) was an English artist. He is best known for his semi-abstract monumental bronze sculptures which are located around the world as public works of art.

**Barbara Hepworth**: (10 January 1903 – 20 May 1975) was an English artist and sculptor. Her work exemplifies Modernism and in particular modern sculpture.

**Mark Rothko**: (25 September 1903 – 25 February 1970) was an American abstract painter. He is best known for his colour field paintings that showed irregular and rectangular regions of colour.



### Sculpture Vocabulary

**Sculpture** – a three-dimensional artwork, made of clay/wood/stone/metal or other found materials.

**Sculptor** – a person who created artwork by modelling, carving, constructing or assembling material together.

**Form** – an object which can be seen from many sides: it has three dimensions – length, width and height.

**Base** – the bottom part on which a sculpture rests or is supported. Delicate sculptures are often attached to a base to support them in position.

**Pedestal** – the support on which a **statue** rests.

**Armature** – a metal 'skeleton' support over which clay or wax is moulded.

**Column** – a structural, vertical cylinder support which is usually made of stone. Nelson's Column is an example of a large column.

**Model** – a detailed three-dimensional work built on a smaller scale, and used as a plan for a larger artwork.

### Types of Sculpture

**In the round** – a three-dimensional sculpture, which is meant to be viewed from all sides.

**Relief** – a sculpture that projects out of a flat surface.

**Additive** – building a sculpture up by adding to a base or armature to create a form.

**Mobile** – a sculpture designed to move in the air.

**Kinetic** – a sculpture whose parts are designed to move mechanically.

**Mosaic** – a sculpture made up of small coloured pieces of tile or glass that are cemented to a wall or floor to create a picture or a pattern.

### Crucial Theoretical Knowledge

- Say who and what my project work has been influenced by.
- Explore the work of key artists of the twentieth century (Picasso, Rothko, Henry Moore, Barbara Hepworth) and the impact of artists work on society at the time.
- Produce my own work inspired by these artists and sculptors. Commenting on reasons why they have used different tools, media and techniques and evaluating work as it progresses.