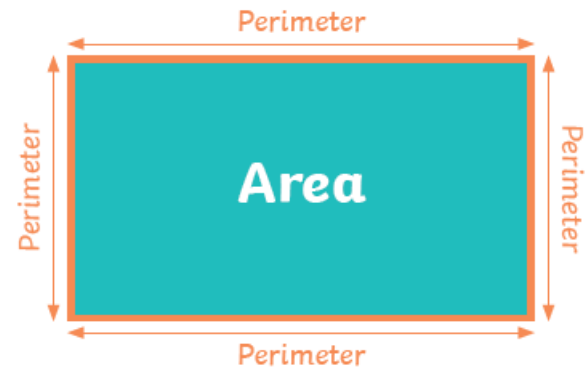


Area and Perimeter

Area is the amount of space inside a 2D shape.

Perimeter is the total **distance** around the outside of a 2D shape.



1 kilometre = 1000 metres

1 metre = 100 centimetres

1 centimetre = 10 millimetres

Fraction and Decimal Equivalents

$$\frac{1}{2} = 0.5$$

$$\frac{1}{4} = 0.25$$

$$\frac{3}{4} = 0.75$$

$$\frac{1}{10} = 0.1$$

Roman Numerals

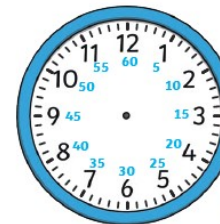
one	1	I
five	5	V
ten	10	X
fifty	50	L
one hundred	100	C

XVIII = 18

XXIX = 29

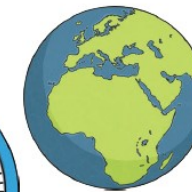
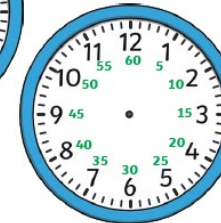
LXXXIV = 84

Durations of Time



There are **60 seconds** in a minute.

There are **60 minutes** in an hour.



There are **24 hours** in a day

There are **7 days** in a week.



There are **12 months** in a year.

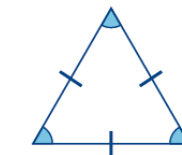
Multiplication and Division Facts

x	1	2	3	4	5	6	7	8	9	10	11	12
1	1	2	3	4	5	6	7	8	9	10	11	12
2	2	4	6	8	10	12	14	16	18	20	22	24
3	3	6	9	12	15	18	21	24	27	30	33	36
4	4	8	12	16	20	24	28	32	36	40	44	48
5	5	10	15	20	25	30	35	40	45	50	55	60
6	6	12	18	24	30	36	42	48	54	60	66	72
7	7	14	21	28	35	42	49	56	63	70	77	84
8	8	16	24	32	40	48	56	64	72	80	88	96
9	9	18	27	36	45	54	63	72	81	90	99	108
10	10	20	30	40	50	60	70	80	90	100	110	120
11	11	22	33	44	55	66	77	88	99	110	121	132
12	12	24	36	48	60	72	84	96	108	120	132	144

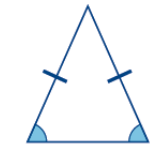
Y4 Maths Knowledge Organiser

Triangles

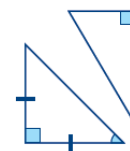
Triangles have 3 sides and 3 vertices. The total of the angles in a triangle is 180°.



An equilateral triangle is a regular polygon. It has sides of equal length and each angle is 60°.

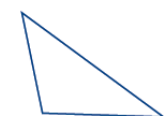


An isosceles triangle has two sides of equal length and two angles of equal size.



A right-angled triangle always has one 90° angle.

It can be isosceles or scalene.



A scalene triangle has no equal sides or angles.

Right angle

The intersection of perpendicular lines creates a right angle.



Acute angle

Any angle measuring more than 0 degrees and less than 90 degrees is acute.



Obtuse angle

Any angle measuring more than 90 degrees but less than 180 degrees is obtuse.

